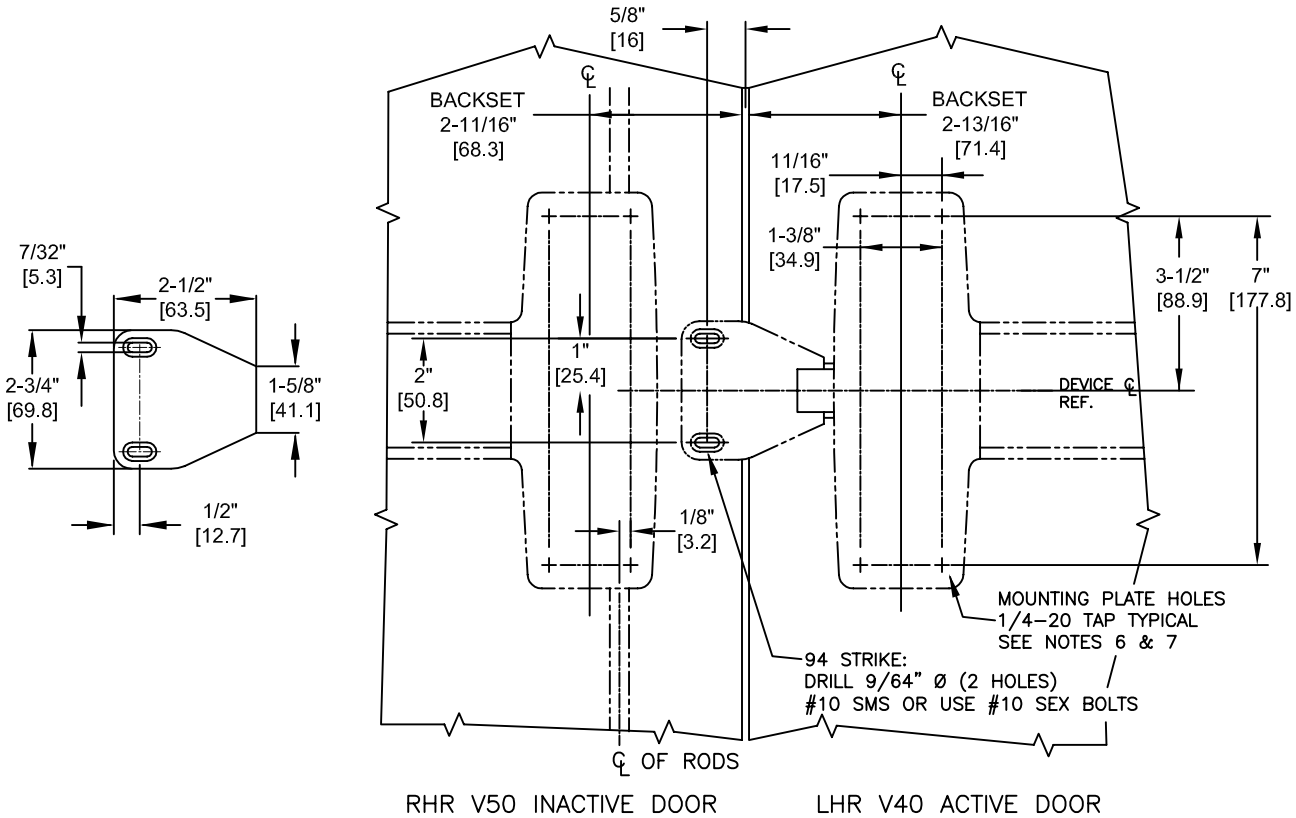


NOTES:

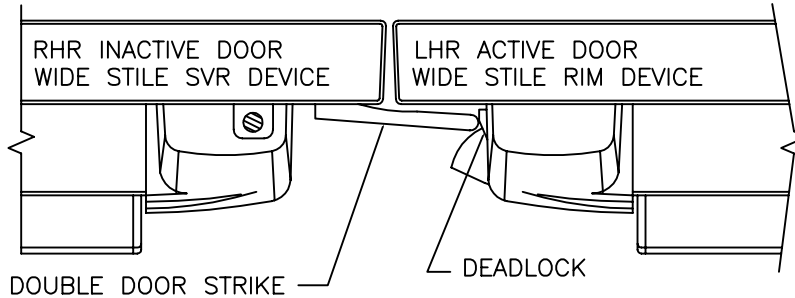
1. DO NOT SCALE DRAWING.
2. DIMENSIONS ARE IN INCHES [mm].
3. REVERSE FOR OPPOSITE HANDING.
4. MINIMUM STILE WIDTH: 4-1/2" [114.3].
5. SEE DOOR REINFORCEMENTS REQUIRED ON T1000 FOR STEEL DOOR
6. IF REQUIRED: THRU-BOLT HOLE SIZE
9/32" INTERIOR DOOR FACE
3/8" EXTERIOR DOOR FACE.
7. IF OUTSIDE TRIM IS REQUIRED, REFER TO OUTSIDE TRIM TEMPLATE.

STEEL FRAME

1/4-20 TAP TYPICAL. SEE NOTES 6 & 7.



NOTE: FOR DEVICE FUNCTION AND OTHER DIMENSIONS, SEE APPROPRIATE DEVICE AND/OR TRIM INSTRUCTIONS



WIDE STILE SHOWN. SEE T1165 FOR NARROW STILE.

HDG. _____ DR. _____		
<p>RESPONSIBILITY</p> <p>Door and Frame Manufacturers are responsible for providing adequate construction or reinforcements for proper installation of hardware shown. All architectural builders hardware must be installed on properly reinforced doors and frames regardless of the type, material or method of construction.</p>	<p>TEMPLATE DOUBLE DOOR WITH 94 STRIKE DEVICES 10 & 20 METAL DOORS</p>	<p>DETEX CORPORATION</p> <p>DO NOT SCALE DRAWING</p> <p>DATE 4-9-09 TEMPLATE NUMBER T1166</p>