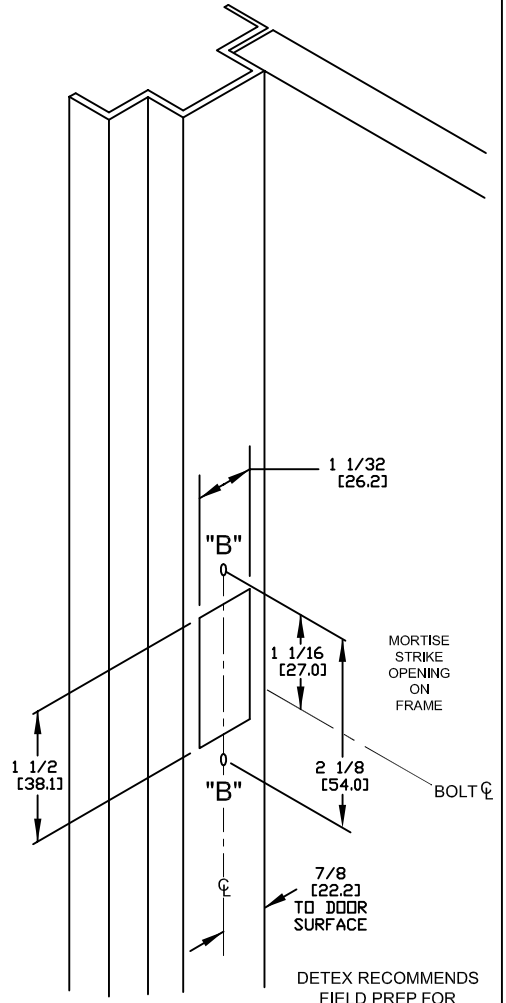
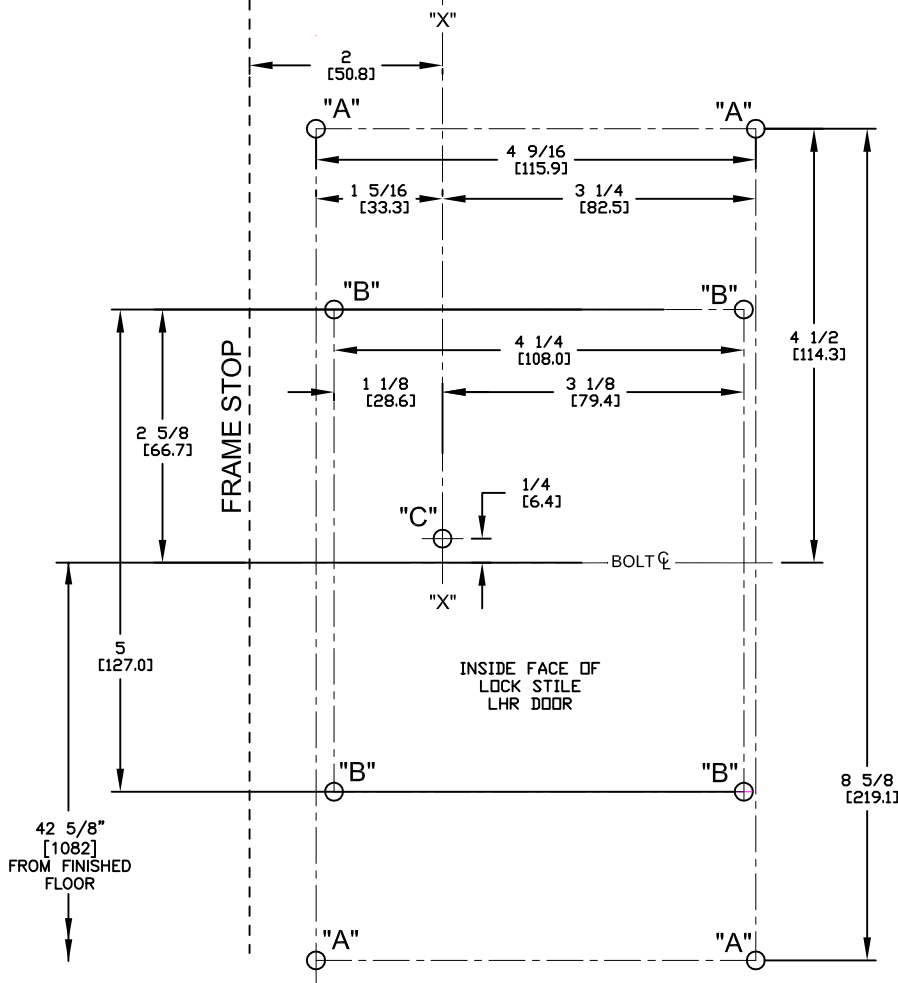


"A" = #18 DRILL (#12 SCREWS)
 "B" = #25 DRILL (#10 SCREWS)
 "C" = Ø1-1/4" THRU HOLE (OKC only)



DETEX RECOMMENDS
 FIELD PREP FOR
 KEEPER

- NOTES:
 1. DIMENSIONS SHOWN IN INCHES AND [mm].
 2. 5/8" STOP SHOWN.
 3. FOR RHR SEE TEMPLATE T2116

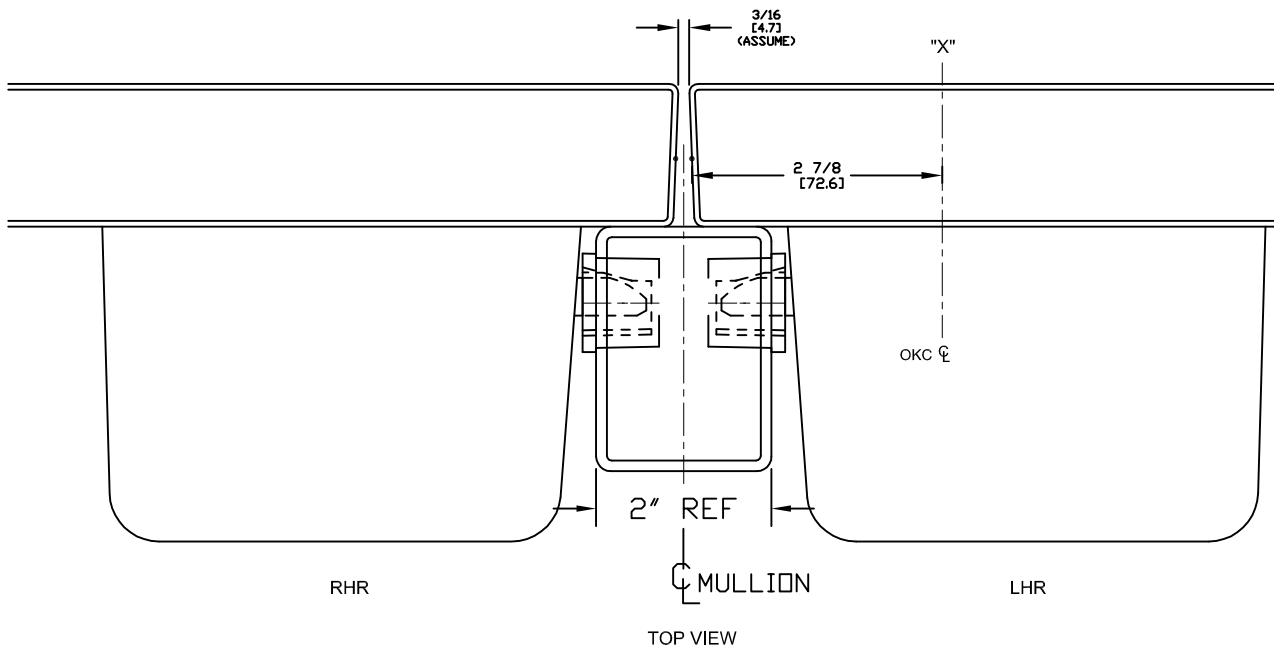
RESPONSIBILITY
 Door and Frame Manufacturers are responsible for providing adequate construction or reinforcements for proper installation of hardware shown. All architectural builders hardware must be installed on properly reinforced doors and frames regardless of the type, material or method of construction.

TEMPLATE
 METAL DOOR
 ECL-230D, LHR
 MORTISE STRIKE

HDG. _____ DR. _____



DO NOT SCALE DRAWING
 DATE 6-12-17 TEMPLATE NUMBER T2115 page 1 of 2



HDG. _____ DR. _____

RESPONSIBILITY
 Door and Frame Manufacturers are responsible for providing adequate construction or reinforcements for proper installation of hardware shown. All architectural builders hardware must be installed on properly reinforced doors and frames regardless of the type, material or method of construction.

TEMPLATE
 METAL DOOR
 ECL-230D, LHR
 MORTISE STRIKE

DETEX
 CORPORATION

DO NOT SCALE DRAWING

DATE 6-12-17

TEMPLATE NUMBER T2115 page 2 of 2